



# Guilden Sutton Church of England Primary School

*Love and Justice for All*

10<sup>th</sup> November 2023

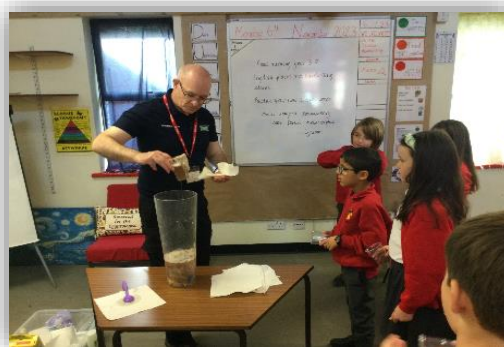
Dear Parent,

## What a jam-packed week!

Today's **Remembrance Service**, led by our wonderful **Year 6s**, was exceptional! The children were **respectful** and showed **empathy** for those who were, and still are, being affected by war. Our thoughts and prayers are with those (near and far) who are impacted by the **war in Israel**.

The **whole school** enjoyed a sewage assembly led by **Chris from Severn Trent**, who spoke about the journey of water (evaporation, condensation and precipitation), potable water and effluent. A very catchy song reminded us of the 3 Ps to go down the toilet: paper, poo and pee!

**During KS2 workshops**, Chris created some fake sewage for the children to filter in groups, which included wet wipes, soap, cotton wool, toys etc. The most efficient cleaners were the team with the clearest water at the end. The children loved this practical session and were **reminded about the importance of binning not flushing!** **Bethan from The Dog's Trust** came in and talked to each class about her job, dogs in distress and what we could do to support their work around the world!



**Mrs. Gilmour from C.E.P.D.** came into **Year 6** to deliver the first part of a **Playground Leaders Course**. She spoke about the skills of leadership including the importance of introducing yourself, eye contact, being authoritative, adapting the curriculum, giving out praise etc. They were also treated to a fantastic poetry and story-writing by a renowned, local author, Ros Roberts. Ros (a former teacher) talked to us about her writing career and how she writes about everyday things such as friendships, school, pets and relationships.

Guilden Sutton C. of E. Primary School, Arrowcroft Road, Guilden Sutton, Cheshire. CH3 7ES  
Tel: 01244 300353 Email: [admin@guildensutton.cheshire.sch.uk](mailto:admin@guildensutton.cheshire.sch.uk) Website: [www.guildensutton.cheshire.sch.uk](http://www.guildensutton.cheshire.sch.uk)  
Headteacher: Mrs Theresa Rainford, B.Ed. National SENDCO Qual. NPQSL.



# Guiden Sutton Church of England Primary School

*Love and Justice for All*



**Year 1 and 2** had a brilliant time on their **Multi skills trip at Ellesmere Port Sports Village.**

**Year 2** had a wonderful time on their trip to **Nantwich** to further consolidate their knowledge and understanding on the history of the **Great Fire of London!**

And finally, **Year 1** made us very proud when reading their prayers at **Collective Worship** on Thursday. Thank you to those who were able to join us.

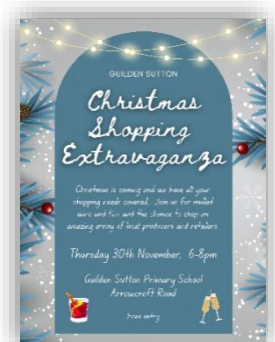


Why not follow us on Facebook to see what Guiden Sutton Church of England Primary School get up to on a typical school day?



The Trustees are hosting an adults only Guiden Sutton Christmas Shopping Extravaganza in school on Thursday 30<sup>th</sup> November, 6pm – 8pm. If you are interested in being a stall holder and selling your products, please contact the school office.

**Newly-agreed 2024-2025 holiday dates are now on the school website!**



**Attendance continues to be a high priority.** Our current attendance is **97.54%**

Moving forward, we will keep you informed every half term if your child's absence falls below 95%.

Guiden Sutton C. of E. Primary School, Arrowcroft Road, Guiden Sutton, Cheshire. CH3 7ES  
Tel: 01244 300353 Email: [admin@guidensutton.cheshire.sch.uk](mailto:admin@guidensutton.cheshire.sch.uk) Website: [www.guidensutton.cheshire.sch.uk](http://www.guidensutton.cheshire.sch.uk)  
Headteacher: Mrs Theresa Rainford, B.Ed. National SENDCO Qual. NPQSL.











# Guiden Sutton Church of England Primary School

*Love and Justice for All*

Please click on the link to visit <https://www.guildensutton-plemstall.church>

I would appreciate it if you could spend a few minutes completing the **School Spider survey** that has gone out alongside this week's newsletter.

<b>Save the Date:</b>		
<b>Monday 13<sup>th</sup> November</b>	<b>Wear 'odd socks' to support Anti Bullying Week! (Uniform as normal!)</b>	
<b>Thursday 16<sup>th</sup> November 9:10am</b>	<b>Reception class prayers</b> – Please join us in the hall for Collective Worship with Heather Carty. If you would like to bring along any donations for the Foodbank, they will be greatly received.	
<b>Friday 17<sup>th</sup> November</b>	<b>Children In Need – Non-uniform.</b> Children are invited to wear spots, pyjamas or anything 'WACKY'! £1 donations if possible. You will need a small amount of money to spend on activities/stalls/competitions that have been planned by Year 6. There will also be a whole-school talent show in the afternoon. If anyone would like to take part, I will be asking children for their acts at the beginning of next week.	
<b>Thursday 30<sup>th</sup> November 9:10am</b>	<b>Year 6 class prayers</b> – Please join us in the hall for Collective Worship with Heather Carty. If you would like to bring along any donations for the Foodbank, they will be greatly received.	
<b>6pm – 8pm</b>	<b>GUILDEN SUTTON CHRISTMAS SHOPPING EXTRAVAGANZA!</b>	
<b>Tuesday 5<sup>th</sup> December 2:00pm</b>	<b>KS1 Performance for Reception families.</b>	
<b>Wednesday 6<sup>th</sup> December 2:00pm</b>	<b>KS1 Performance for Year 1 for families.</b>	
<b>Thursday 7<sup>th</sup> December 2:00pm</b>	<b>KS1 Performance for Year 2 families.</b>	

Guiden Sutton C. of E. Primary School, Arrowcroft Road, Guiden Sutton, Cheshire. CH3 7ES  
Tel: 01244 300353 Email: [admin@guildensutton.cheshire.sch.uk](mailto:admin@guildensutton.cheshire.sch.uk) Website: [www.guildensutton.cheshire.sch.uk](http://www.guildensutton.cheshire.sch.uk)  
Headteacher: Mrs Theresa Rainford, B.Ed. National SENDCO Qual. NPQSL.



Artsmark  
Silver Award  
Awarded by Arts  
Council England




THE CHURCH  
OF ENGLAND  
SIAMS Outstanding



# Guilden Sutton Church of England Primary School

*Love and Justice for All*

Friday 8 <sup>th</sup> December	Christmas FUN DAY!	
Monday 11 <sup>th</sup> December 2:30pm	KS2 Carol Concert!	
Tuesday 12 <sup>th</sup> December 1:00pm	KS2 Christmas Party!	
Wednesday 13 <sup>th</sup> December	Christmas Dinner! KS1 Christmas Party!	
Friday 15 <sup>th</sup> December	PANTO! (Oh yes it is!) Christmas Jumper Day Break up for Christmas	
Wednesday 3 <sup>rd</sup> January 2024	<b>Children return to school</b>	

Please see attached poster for your information.

Have a wonderful weekend,

Theresa Rainford

Guilden Sutton C. of E. Primary School, Arrowcroft Road, Guilden Sutton, Cheshire. CH3 7ES  
 Tel: 01244 300353 Email: [admin@guildensutton.cheshire.sch.uk](mailto:admin@guildensutton.cheshire.sch.uk) Website: [www.guildensutton.cheshire.sch.uk](http://www.guildensutton.cheshire.sch.uk)  
 Headteacher: Mrs Theresa Rainford, B.Ed. National SENDCO Qual. NPQSL.